



# Capability Statement

2023



[www.totalenvironmentalconcepts.com.au](http://www.totalenvironmentalconcepts.com.au)





## Introduction

Total Environmental Concepts is an organisation exceeding 40 years of experience in the provision of accredited, proven safe and reliable quality commercial environmental services.

Total Environmental Concepts is an environmental civil landscape construction and maintenance company which will enhance, strengthen, improve, develop and grow with your project needs by bringing specialist equipment, knowledge and practical experience.

Our key strength is providing positive environmentally focused outcomes for all parties involved within the process.

We utilise our extensive fleet of civil, earthmoving, and environmental plant and equipment to achieve our clients expectations. These services are provided through QLD and NSW in Construction, Developments, Civil, Rehabilitation, Emergency Access, Council Maintenance, Road and Rail, Primary Industry and National Parks.



Established 2014

### Our Strengths Include:

- Knowledge and practical experience
- Specialist equipment
- Response time
- Reliable Service
- Productivity
- Competitive differentiation
- Minimised risk
- Compliance
- Operational costs

### Core Specialties Include:

- Commercial Mowing & Acreage Mowing
- Track & Trail Construction
- Stormwater Management
- Civil & Earthworks
- Forestry Mulching & Clearing
- Fire Breaks & Slashing
- Weed Control & Turf Management
- Easement Management
- Environmental Rehabilitation

# Contents

Contact Details	5
About Us	6
Our Chief Environmental Contractors	7
Our Equipment	8
Commercial New Estate Mowing & Maintenance	9
Slashing	10
Clearing & Forestry Mulching	11
Fire Breaks & Slashing	12
Track and Trail Construction	15
Bioretention Basin Clean & Maintenance	19
Water Detention Systems	20
Creek Restoration	22
Civil and Earthworks	23
Transport Services	26
Erosion Control Management	27
Rehabilitation and Maintenance Works	28
Soil Amelioration for Revegetation Sites	29
Revegetation	31
Tree Relocation	32
Completed/Ongoing Projects 2021-2022	33



# Contact Details

## Head Office

35A Centenary Place  
Logan Village  
Queensland 4207

## Postal Address

PO Box 248  
Nerang  
Queensland 4211

## Peter Sands

CEO/General Manager

Mobile: 0402 644 380  
peters@totalenviro.net.au

## Mark Holden

Director

Mobile: 0417 437 537

## Jacinta Holden

Accounts

Mobile: 0434 390 565  
jacintah@totalenviro.net.au  
admin@totalenviro.net.au



# About Us

## Total Environmental Concepts Offers:

- **SWMS & Risk Assessments Quality**
- **Policy**
- **Work Health & Safety Policy**
- **Environmental Policy**
- **Workplace Rehabilitation Policy**
- **Fitness for Work Policy**
- **Daily Toolbox Meetings**
- **Task Risk Assessments Integrated**
- **OHS System**
- **Fully compliant machinery**
- **Fully Insured**
- **Member of Landscape Queensland**

## Capacity

Total Environmental Concepts has ready access to the specialised equipment required to meet environmental requirements including Wetland Construction, Bioretention Basins, Sediment Ponds, weed control and mowing across all scales. Not only do we have extensive knowledge across specialised environmental and commercial landscaping services, we are also a preferred partner for civil works across Queensland and Northern NSW.

## Objectives

To constantly review and expand Services and Products offered to our Clients through R&D within our expertise.

## Mission Statement

Our Mission is to be acknowledged for our true passions and values, our people, partnerships and performance while bringing inspiration, innovation and relentlessly delivering unique Environmental services to every client.

## Keys to Success

Our Knowledge, Life Experience and strong network of clients built up of 35 years in our core industries.

## Contact Us

Phone: 1300 135 743

[info@totalenviro.net.au](mailto:info@totalenviro.net.au)

[www.totalenvironmentalconcepts.com.au](http://www.totalenvironmentalconcepts.com.au)



# Our Chief Environmental Contractors



## Peter Sands

**CEO / GENERAL MANAGER / TECHNICAL CONSULTANT**

Peter has had over 38 years' experience in the Construction, Nursery, Landscape and Environmental Service industries. He has employed over 25 staff and worked with 150 clients as a leading Environmental Contractor.

Peter has a broad range of skills from plant transportation for the landscaping industry to joinery and carpentry. He has owned and operated a 46-hectare tree farm and nursery with over 20,000 trees where he specialised in relocating and caring for a variety of established plants.

### Qualifications

- Cert IV in Workplace Health and Safety
- Cert III in Parks & Gardens
- Cert III in Landscape Construction
- Cert III in Carpenter & Joiner
- Chainsaw Ticket
- Heavy Combination Licence
- RII / VOC Skid Steer, Excavator, Tipper, Tractor & Track Tipper
- ACDC Spray Course
- Commercial Operators Ticket
- First Aid and Fire Certificates
- Animal Spotters Licence

### Experience with

Transportation & relocation of large QLD bottle trees, Livistona palms, cycads and grass trees

Driving & Operating

- Bobcats & Excavators with specialised attachments
- Tree Spade Operation
- Semi-trailers with cranes



## Mark Holden

**DIRECTOR / TECHNICAL CONSULTANT**

Mark has over 40 years' experience as an owner operator working as a landscape contractor/plant operator within the Horticulture and Environmental industry. His breadth of experience in the field of landscape contracting enables him to provide details and sound advice on preferred work methods, vital to improving the design process and product quality.

Mark has managed and supervised a variety of commercial landscaping projects which include The Royal Pines, The Moorings, Bunnings Warehouse's, The Glades at Robina and Harvey Norman Centres to name a few.

### Qualifications

- RII / VOC Skid Steer, Excavator, Tipper, Tractor & Track Tipper
- ACDC Spray Course
- Commercial Operators Ticket
- Chainsaw Ticket
- Heavy Combination Licence
- First Aid and Fire Certificates
- Animal Spotters Licence

### Experience with

Managing and supervising commercial landscaping projects Earthworks and structural landscaping

Engineering rock retaining walls

Driving & Operating

- Bobcats & Excavators with specialised attachments
- Tree Spade Operation
- Slashers/Forestry Mulchers/Stump Grinder

# Our Equipment

## Tipplers & Trucks

- 3 x 12 Tonne
- 4x4WD 3 tonne
- 3 tonne Tipper
- 5 Tonne Flat Top Truck & 10 tonne 4 x4 Flat Top Truck

## Plant Trailers

- 16 Tonne
- 12 Tonne

## 4000 Litre Water Tank and Sprayer Roller

- BOMAG BW120AD-4 Smooth Drum Roller

## Spray Equipment

- 4 x 4 WD 700 Liter Quick Spray Unit with 2 remote Reels with FoamMarker

## Tractors and Mowers

- 2 x 4WD Cab Tractor with 4 in 1 front
- 220 Side Shift Flail
- 1 x Heavy Duty 1800mm Slasher
- 1 x 2100mm HD Slasher
- 2400 mm Cultivator plough
- 1800 mm Rotary Hoe
- 2 x Signel Rippers
- Kubota 4wd 1800mm Front Deck Mower
- Kubota Commercial Zero Turn Mower
- 2 zero Commercial turn mowers

## T770 Track Skid Steer

- 4 in 1 Bucket
- Hydraulic Tilt for Bucket
- Hydraulic Rear Rippers

## T590 Skid Steer

- 4 in 1 Bucket
- Hydraulic Tilt for Bucket

## T660 Skid Steer

- 4 in 1 Bucket
- Hydraulic Tilt for Bucket

## Yanmar C30R-2B 3Tonne Track Tipper

- 1000 Litre Water Tank and Sprayer
- 4 cubic Mulch Cage

## Morooka MST800VD 5Tonne Track Tipper 2x5.5Tonne Excavators

- Power Hitch
- Hydraulic Rock Grab
- 300mm, 400mm, 600mm, 1200mm Buckets
- 1200mm Sieve Bucket
- Ripper
- Auger 300, 450, 600mm with 1200mm extension
- Compaction Wheel
- Crane & Burst Values
- 1200mm Flail Slasher
- 1200mm Stick rake.
- 2 x Forestry Mulcher (suitable to 250mm Dia.)

## 2.5 tonne Excavator & Attachments Skid Steer Attachments

- 1800mm Smooth Drum Vibrating Roller
- 2300mm Stick Rake
- 2m<sup>3</sup> Custom Mulch Bucket
- Auger 300, 450, 600mm with 1200mm extension
- Specialised Side Shift, Rotating Trencher
- Hammer Attachment
- 1500 kg Lifting Jib
- 1500 kg Forks
- Road Sweeper
- Bobcat 1100mm Tree Spade
- Front Rippers
- 2400 Grader attachment
- 1800mm Flail Mower
- 1800mm Slasher
- 3 x Forestry Mulcher (suitable to 250mm Dia.)
- Stump Grinder
- Hydraulic high-volume blower





## Commercial New Estate Mowing & Maintenance

- New Development Vacant Blocks
- Reserves and Parkland
- Street Scapes and Verges
- Land Bank holdings Commercial
- Slashing
- Estates / Subdivision allotments
- Brush cutting / whipper snipping
- Edging
- Litter and debris pick up
- Residential acreage
- Sports grounds
- Weed control
- Prompt attention to Council notices





## Slashing

We offer commercial slashing services in combination with commercial mowing, property clearing, fence, land clearing, forestry mulching and weed control. We work with Government departments, Councils, Surveyors, Developers, Civil Contractors and owners of large properties.

- **Tractor slashing, grass cutting and property clearing**
- **Regular land maintenance services**
- **Large residential Developments**
- **Industrial locations**
- **Rural landholders**
- **Property managers and Developers**
- **Commercial sites**
- **Open space venues**
- **Fire breaks**
- **Pre-Clear of under growth for Environmental assessment studies**
- **Pre-Survey boundary clearing Land Bank holdings**





## Clearing & Forestry Mulching

### Forestry Mulchers

- Woody weed such as Lantana, Privet, Boxthorn, Blackberry Infestations
- Pre-Survey boundary clearing
- Roadside verge clean-up
- Land clearing preparation
- Re-growth Scrub
- Fire Hazard Prevention & Fuel Reduction

As an environmentally friendly way to clear land, forestry mulching is fast becoming a preferred method to the old 'slash and burn' methods. Specific areas, or even small areas and small plants can be chosen to be cleared or not. The selected areas are mulched on site and help to preserve parts of the landscape. In addition to the immediate and short-term benefits of forestry mulching, there are long-term benefits that can improve your soil as well. The mulch that's left behind offers essential nutrients which can help improve soil.





## Fire Breaks & Slashing

- Fire Trail maintenance and repair
- Fire Hazard Prevention & Fuel Reduction
- Dense heavy grasses clean-ups
- Small to Large Broad Acreage Blocks
- Council Notices. Acre Allotments to Large Acreage
- Stick Raking

We have two tracked Bobcat skid steers, and a excavator with a forestry mulcher and specialized mulching slasher attachments along with 2 Tractors with slasher or flail mowers.

The forestry mulching attachments leaves a well formed blanket of mulch over the cleared site that assists in site stability and safety.



## Weed Control and Weed Spraying

We have ability to take on a diverse range of large scale weed control methodology. We possess a range of equipment and specialized Attachments suitable for weed management requirements such as mulching slashers for our Excavators and Tracked Bobcats, spray unit fitted with a boom spray.

These attachments help to provide an all-encompassing maintenance service for landscape and environmental based industries. Managing weeds will reduce these impacts, improve land and ecological values, and reduce the risk of wild-fire by removing ladder fuels. By reducing weeds, we can help promote regeneration of native plant species.

We engage in various control techniques for invasive plant species including chemical spraying, mechanical and manual control of environmental and broad care weed species.

With the use of specialised equipment and highly skilled operators Total Environment Concepts provides weed control and management to the landscape and environmental industries.





## Easement Management

We can construct, upgrade, and maintain fire breaks. Our specialised equipment and experience in this field has made us become the leading supplier in South East Queensland and Northern New South Wales of this service.

We have tracked Bobcat skid steer, with a stick rake forestry mulcher, flail mower and a specialised mulching slasher attachment.

This specialised equipment allows us to access steep and difficult areas, work in sites during inclement weather while delivering our services in a cost-effective manner for our clients. We also have a 5.5-tonne excavator with a 900mm specialized mulching flail and forestry mulcher attachment that, combined with our experienced operators, clear vegetative matter on steep slopes.

- **Fire hazard Prevention Fuel Reduction**
- **Dense heavy grasses**
- **Woody weeds such as Lantana**
- **Pre-clear of under growth**
- **Pre-survey boundary clearing**
- **Roadside verge**
- **Regrowth Scrub**
- **Fire Breaks**
- **Stick Raking**





## Track and Trail Construction

Our Track and Trail construction teams extensive knowledge of access track design, the need to minimise and disrupt surface water flows, how to ensure water is directed off the track without causing downstream erosion events and how to ensure what we build can last.

All of which can be constructed to conform with all standard codes in accordance with Local Council and State Government requirements. This includes National Parks track construction. Reconstruction works of Australian standards AS 2156-2001.

### Tracks we specialise in construction of:

- Fire Breaks and Fire Access trails
- Bush Walking tracks and Recreation trails
- BMX tracks and Mountain Bike trails
- Vehicle access tracks
- Watercourse crossings
- Recreation trails
- Mountain Bike Tracks



## Bush Walking Tracks and Recreation Trails

Total Environmental Concepts specialises in constructing, upgrading and maintaining a variety of Bush Walking and Recreation Trails throughout natural areas throughout South East Queensland and Northern New South Wales. Depending on their predicted usage these tracks and trails can be made from road base, rock, compacted natural earth, material or decomposed granite.



## BMX Tracks/Mountain Bike Trails

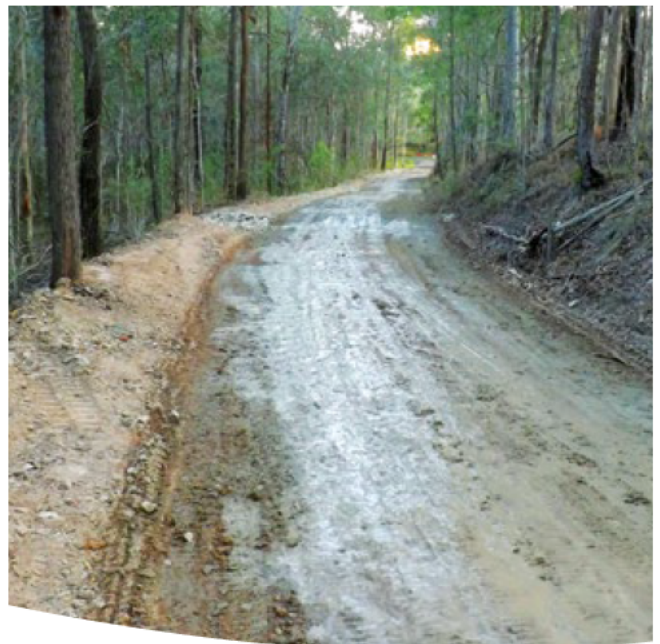
Total Environmental Concepts can build & maintain a range of mountain bike trails and BMX tracks suitable for all levels of ability and fitness. These can be built in accordance with client specifications and International Mountain Biking/BMX Associations standards if required and can include any array of features that you may require. Our excavators, tipper trucks, range of tracked Bobcat skid steer combined with our highly experienced machinery operators Total Environmental Concepts has the equipment and knowledge to bring your Mountain bike trail or BMX track designs to life safely, cost effectively and with absolute minimal disturbances to the surrounding natural assets.



## Fire Access Trails

Total Environmental Concepts specialises in constructing, upgrading and maintaining a variety of Fire vehicle access roads.

Our experienced operators and knowledge in this service and continues to help manage maintain and protect natural area assets throughout South East Queensland and Northern New South Wales. Depending on their predicted usage these tracks and trails can be made from road base, rock, compacted natural earth, material or decomposed granite.







## Vehicle Access Road Construction

Total Environmental Concepts have specialised in constructing, upgrading and maintaining a variety of vehicle access roads. Our experienced operators have extensive knowledge in these types of service and continue to help manage, maintain and protect natural area assets throughout South East Queensland and Northern New South Wales.

Depending on their predicted usage these tracks and trails can be made from road base, rock, material or decomposed granite.





## The right Environmentally Friendly Equipment for Tracks, Trails and Vehicle Access Roads

Our excavators, tipper trucks, tracked Bobcat skid steer loaders with our 1800 mm vibrating smooth drum roller attachment, tracked tipper and team of highly experienced operators with Environmental awareness and knowledge can build access tracks in areas thought of as being inaccessible with minimal disturbance to Environmentally sensitive sites.





## Bioretention Basin Clean & Maintenance

At Total Environmental Concepts, we are experts with over 38 years experience in the field. Not only are we capable of assisting with the construction of wetlands, bio basins and sediment ponds, we are also able to ensure they are maintained effectively over time. Routine cleaning and maintenance are paramount to making sure the systems are working as expected and our team are experts at getting them back into tip-top shape.

As part of any new development in Brisbane or Gold Coast, bioretention basin construction must be taken into account. With councils focusing on water sensitive urban designs, there's no way around it for developers. We can help you secure your bond faster. Our team has specialist equipment and knowledge on bioretention basin construction, cleaning and maintenance. We can help you get it all back into tip-top shape post-construction so you can secure the return of your development bond as soon as possible.





## Water Detention Systems

Total Environmental Concepts have the ideal equipment for servicing and maintaining Water Detention Systems. We utilise our 6 Tonne Excavators and Track Tipplers to complete required work. While completing maintenance, our operators ensure a high level of care not to disturb native aquatic life and fauna.

Once maintenance is completed, the Detention System will run smoothly for another decade.

Some of our key services are:

- De-watering full systems
- Remove silt and contaminants
- Repair overflow inlets and rock faces
- Weed removal
- Revegetation





## Creek Restoration

Total Environmental Concepts has been engaged in collaboration to repair damage in multiple creek areas with the objective of restoring the creeks to their original condition.

Repairs included:

- Removal of approximately 2000 tonne of river rock
- Placement of 1.5 to 2.5 tonne imported rock groins to redirect water
- Placement of logs in creek banks
- Construction of new bridges
- Removal of approximately 3000 tonne of silt
- Reshaping the bank
- Re-vegetating the banks immediately
- Excavating shallow trenches





## Artificial Wetlands Construction & Rock Lined Channels

- **Wet land Construction Gainsborough Greens**
- **Deep Rip & Rotary Hoe**

Under instructions and design of an Environmental service contractor we have the equipment and the skill to construct wetlands for all the below purposes, specific to local conditions and taking into consideration the pre-existing habitat.

Our skilled machinery operators are experts in the digging, moving, and positioning of materials to create highly efficient wetland environments. Artificial wetlands are water detention areas that are constructed to achieve one or more of the below objectives:

- **Control of storm water**
- **Surface water management**
- **Floodplain enhancement**
- **Habitat creation - for both native and migratory wildlife. Habitat creation is restoring and maintaining the health of an Eco system by reinstating and regeneration, minimising effects of weeds, erosion and soil disturbance**





## Civil and Earthworks

### Tippers, Excavators, Skid Steers, Tractors and Attachments

We can supply the following services:

- Bulk mulching
- Turf Prep and Garden Prep
- Excavation
- Rock Wall Construction
- Screed and Leveling
- Street Tree and Feature Tree Holes and Installation
- Post Hole Boring with either an Excavator or Bobcat
- Deep Ripping
- Rotary Hoeing
- Fork Attachment
- Slashing
- Stick Raking
- Excavation
- Final Trim
- Stump Grinding
- Track and Trail Construction & Management

- Tipper Hire
- Rock Swales & Drains
- Habitat creation
- Erosion and sediment control
- Batter stabilisation
- Rehabilitation and weed control





## Transport Services

Total Environmental Concepts have a variety of equipment for the transportation of material both on road and difficult sites / terrain. Our track tipper allows us to complete jobs on difficult terrains with greater efficiency, saving you time and money.

- 4 x4 WD Tipper
- 6 & 3 Tonne Track Tippers
- 3 x 12 Tonne Tipper







## Bulk Earthworks

We know that bulk earthworks can be challenging, but here at Total Environmental Concepts we offer cost effective solutions and with our specialised equipment, we can ensure that the work is completed on time and complete your earthwork on budget and in time with your project requirements.

## Bulk Mulching

With 3 x 10 cubic meter Tippers, 2 cubic meter custom mulch buckets on either of our 2 tracked Bobcat skid steers, moving large volumes of mulch quickly around site with minimal racking is our specialty. We also have a Dean Trailer with extended sides and floating tyres and a Track Tipper with a mulch cage perfect for tight access.



# Attachments

## Hammer

The hammer attachment is ideal for breaking through concrete, asphalt and rock with the powerful hydraulic breaker that delivers maximum efficiency.

## Stump Grinder

- Able to grind up to 1 meter in diameter
- Grinds below the surface level 400mm

## Rotary Hoe

The ideal attachment for ground preparation prior to seeding, turfing and planting.

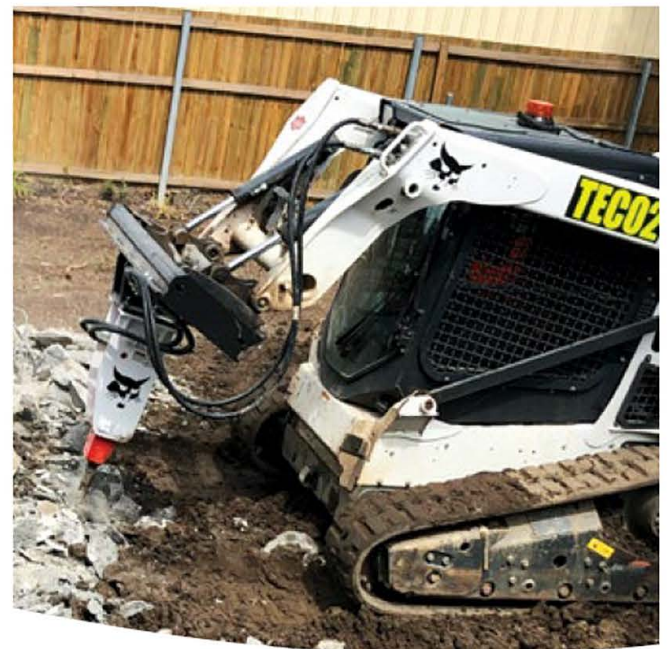
Features:

- Standard dual rotation with bi-directional tines
- Front edge is designed to level out uneven ground

## Deep Ripping

Our Deep Ripper is best used for:

- Cultivation
- Preparation for re-vegetation
- Excavation





## Erosion & Dust Control Management

### **DustChek** MINING & INDUSTRIAL New Services

Hydroseeding, Hydro Mulching, and **DustCheck** Dust Control. For Councils, Government bodies, Developers, and Civil agencies, our services are the key to efficient and eco-friendly land management. With Hydroseeding, we employ a state-of-the-art technique that promotes rapid grass growth, preventing erosion and ensuring green landscapes in no time. Hydro Mulching takes it a step further, creating a nutrient-rich environment for plants to flourish, ideal for large-scale projects. Batter Stabilization is all about holding the soil on a slope while the determined method of stabilization is either being constructed or is achieving its desired outcome.

We have extensive experience on the best ways to stabilize a batter, no matter how steep, with staff qualified in rope usage, getting to the steepest of sites is totally possible. Additionally, our **DustCheck** Dust Control system provides a sustainable approach to managing dust pollution, crucial for maintaining air quality standards. **DustCheck** safeguards your site from Silica dust, ensuring comprehensive protection.





## Rehabilitation and Maintenance Works

- Habitat Creation
- Wallum Frog Ponds

Our Natural area rehabilitation team can provide everything from forestry mulching, slashing, weed spraying, construction and implementing, and maintaining a range of Rehabilitation services from creek rehabilitation, construction of habitat like artificial wetlands to re-vegetation and offset plantings.

With access to reliable plant suppliers, material providers and a keen eye for plant nutrition and disease symptoms, the team can ensure your Projects success Revegetation is the action of restoring something that has been damaged to its former condition, with our environment and natural areas that means treatment from the waterways through to the creation of forest canopy that enables the lower story to function and thrive.





## Soil Amelioration for Revegetation Sites

Revegetation on civil sites often requires topsoil amelioration. Correct amelioration and fertilisation of topsoil, allow the system to begin functioning correctly again with the addition of lime, gypsum and compost which work to unlock nutrients within the soil.





### Deep ripping

Deep ripping is of particular benefit when it is used to break through a compacted pan or distinct constraining layer, allowing root access to unconstrained soil water beneath this layer.

Water-repellent ('non-wetting') soils are a major constraint

Deep ripping is of particular benefit when it is used to break through a compacted pan or distinct constraining layer, allowing root access to unconstrained soil water beneath this layer.

### Cultivation

Soil cultivation improves the condition of the soil prior to establishing plants. Cultivation is an important step in gardening which can determine whether plants will thrive. Soil cultivation can also include adding soil amendments to improve the health of the soil.





## Revegetation

When native vegetation is highly degraded or has been totally cleared so that natural regeneration is no longer possible, revegetation is necessary to reinstate native vegetation and habitat.

The choice of method will depend on the size and nature of the site, the time and money available, and the purpose of the revegetation.

The benefits of landscape regeneration, reforestation and re-vegetation, include:

- **Preserving biodiversity**
- **Reducing soil and water loss and degradation**
- **Carbon sequestration**
- **Increasing soil fertility and productivity**
- **More sustainable environment Better**
- **pollination**
- **Enhanced water quality**
- **Erosion management**
- **Weed control**

Our plant and equipment include a variety of machinery from water trucks and excavator, bobcats which allows us to perform re-vegetation on small- or large-scale sites, plantings in a variety of situations including wetlands, steep batters to advanced tree relocation by multiple methods.

Preparation and maintenance are usually critical for revegetation success, so it is worth investing time and resources to get it right.

### Weeds

Weed competition is one of the most serious threats to planting success. Weed removal by light cultivation, hand pulling, digging before planting and or during the first few years.





## Tree Relocation

In the area of Tree Relocation and Transplantation, we offer the experience, knowledge, and equipment with over 38 years' experience.

We are engaged by large Developers and Landscape companies to dig and re-establish, *Xanthorrhoea johnsonii* into containers, *Brachychiton rupestris* and large feature Ornamental trees for re-planting in their Developments with a very high record for success Tree relocation and transplantation is an excellent solution for specimen Trees or Plants for Developers, Landscapers, Government, Councils or Mining Sites Many of our Endangered Native plants can be salvaged, re-established and planted back into your projects.





# Completed/Ongoing Projects 2022-2023

- Construction of approx. 4 km of new fire trail western escarpment Tamborine Mountain Scenic Rim Council
- Slash and mow multiple land bank areas held by developers on an ongoing basis up to 300 acres.
- Repair Dam wall for retention as a wildlife asset Logan City Council Stoneleigh.
- Rectification of multiple Bioretention basins at Logan City Council, remove silt, mulch, jute, replant and maintain.
- Forestry mulch using Excavator & Bobcat Bird Rost Manly Boat Harbor
- Forestry mulch with 5 tonne excavator large areas of creek bank Franklyn Vale for removal of peeper trees and woody weeds to allow for revegetation of creek corridor.
- Fire track repair Wickham state forest for Department of Environment and Science
- Relocate ex-ground multiple trees Nudgee Golf Course
- Repair all access tracks Granada productions Northern NSW
- Supply *Livistonia decora* to multiple projects under a sustainable harvest plan
- Walking track repairs QPWS Enoggera Dam
- Forestry Mulch and slashing 320 acres. Ripley area Land bank asset
- Relocate using Tree spade 43 mature Peach trees Tamworth Agricultural Collage
- Deep rip and rotary hoe Revegetation area Chambers Ridge prep for replanting
- Fire Trails forestry mulching and maintenance Redlands City Council.
- Construct multiple creek and gully crossings for Redlands City Council.
- Fulton Hogan Basin repairs and planting
- Parks and Gardens projects Logan City Council
- Tree Relocation Yarrabilba new Sales office
- Penfold Properties Bioretention and Streetpits strip and plant Waterford Rd
- Fire Trail repairs, crossings & slashing Scenic Rim Council multiple sites
- Lightforce Solar Farm Woolooga fire trail construction
- Dig and prep large figs to 40 tonne Shoreline Estate Redland Bay
- Slash and mow Port of Brisbane assets
- Flood repairs gardens and Bio retention basins Queens Wharf Brisbane



Head Office: 35A Centenary Place, Logan Village QLD 4207  
Postal Address: PO Box 248 Nerang QLD 4211  
[www.totalenvironmentalconcepts.com.au](http://www.totalenvironmentalconcepts.com.au)

ABN: 11 600 627 343 | ACN: 600 627 343